

# Resilience and Renewal: Understanding and Healing Women's Trauma

- A unique perspective of trauma through a woman's lens
- Two experts in the fields that primarily work with women

Friday, May 10, 2024 | 9:00 AM – 3:00 PM ET

**Live Stream Series (Online Synchronous Training)**

**\$74.99 Early Bird Registration**

*After April 26<sup>th</sup> registration is \$99.99*

Please scan QR Code or  
register online at

[www.ceucreationsinc.com](http://www.ceucreationsinc.com)



## 5 CREDIT HOURS APPROVED FOR:

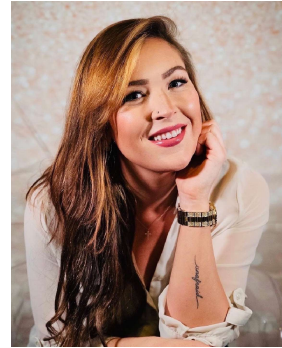
- **Social Workers**  
ASWB ACE – 5 Clinical CE Credits  
New York State Education Department's State Board for Social Work – 5 Contact Hours
- **Case Managers**  
CCMC – 5 Contact Hours
- **Nurses**  
California Board of Registered Nursing – 5 Contact Hours
- **Counselors**  
NBCC ACEP – 5 Contact Hours  
NY State Education Department's State Board for Mental Health Practitioners – 5 Contact Hours

*Attendance or applied credit certificate available for other credentials.  
Please make sure to check with your own state board to ensure transferability of CE credit.*

## PRESENTED BY:



**Marie Selleck, LMSW, CAADC,** and Owner of Marie E Selleck Therapy and ME Selleck Coaching



**Gretchen McCall, BA,** Public Health, Supervisor of Braking Traffik

*Thank you to the generous support of our sponsors!*



*Additional information for each sponsor can be found in the  
2024 CEU Creations Georgia Supporter Directory that will be provided to each registrant.*

*For more information on the course, accommodations for disability, grievances, or any other concerns, please contact CEU Creations via Patty Tucker at [patty@ceucreationsinc.com](mailto:patty@ceucreationsinc.com) or 770-880-9873.*

Copyright 2023 – CEU Creations | [www.ceucreationsinc.com](http://www.ceucreationsinc.com)

# Resilience and Renewal: Understanding and Healing Women's Trauma



## AGENDA

<b>8:45 AM - 9:00 AM:</b>	Log In and Virtual Networking
<b>9:00 AM - 11:50 AM:</b>	Women and Trauma – <b>Marie Selleck, LMSW, CAADC</b> , and Owner of Marie E Selleck Therapy and ME Selleck Coaching <i>(includes a 10 minute break)</i>
<b>11:50 AM - 12:30 PM:</b>	<i>Lunch and Sponsor Spotlight</i>
<b>12:30 PM - 3:00 PM:</b>	Women and Trauma Interventions, Holistic Approaches, and Other Resources; <b>Gretchen McCall, BA</b> in Public Health, Supervisor of Homicide and Other Violent Crimes with Family Resources <i>(includes a 10 minute break)</i>

This presentation will help individuals understand the variety of causes of trauma throughout a woman's lifetime, and how trauma manifests in women throughout their lifetime and in different roles. There will be a specific focus on understanding the long-term impacts of childhood abuse and neglect on a woman's self-esteem and ability to advocate for herself, as well as acute traumas resulting in Post-Traumatic Stress Disorder (PTSD). Participants will learn risk factors that contribute to repetitive trauma, including the ACE study. Participants will leave the training with a better understanding of the "domino effect" of trauma in women and how it impacts generations, as well as how to best provide compassionate support and referral when appropriate and necessary. Participants will also learn about interventions and holistic approaches to healing. This engaging and informative event is designed to equip helping professionals with the knowledge and skills needed to make a real difference in the lives of women who have experienced trauma.

### BY ATTENDING OUR WORKSHOP, YOU WILL BE ABLE TO:

- Recognize how trauma manifests as a woman ages, as well as the generational impacts
- Discover how to interact and assess people with different levels of trauma
- Identify the stages of change and how to support individuals in different parts of their life journey
- Give examples of holistic approaches to treating women with a history of trauma
- Identify resources that may be utilized

*Course Interaction and Technical Requirements:* This live webinar is fully interactive. Attendees may ask and answer questions throughout the presentation and participate in instructor-led discussions. A computer or mobile device is required. Zoom account is *not* required. You will receive an email approximately 24 hours prior to the start of the class with a link to the webinar.

**In order to receive credit, you must log in on time, attend the entire presentation, and complete an online evaluation within 30 minutes of the conclusion of the event. Attendance log and Zoom analytics will be reviewed by the CE Director. Certificates will be provided in approximately 5 business days.**

Target audience: Social workers, case managers, discharge planners, nurses, counselors, and other healthcare professionals.

**SOCIAL WORKERS:** CEU Creations, #1239, is approved as an ACE provider to offer social work continuing education by the Association of Social Work Boards (ASWB) Approved Continuing Education (ACE) program. Regulatory boards are the final authority on courses accepted for continuing education credit. ACE provider approval period: [11/22/21-11/22/24]. Social workers completing this course receive 5 Clinical continuing education credits.

CEU Creations, Inc. is recognized by the New York State Education Department's State Board for Social Work as an approved provider of continuing education for licensed social workers #SW-0616. This activity is approved for 5 contact hours.

**NURSES:** 5 Contact Hours - CEU Creations is an approved provider of nursing CEs through the California Board of Registered Nursing. Provider number: CEP17905. All states retain their own licensing authority through their own boards. Please make sure to check with your own state board to ensure transferability of the CE credits.

**COUNSELORS:** 5 Contact Hours



CEU Creations has been approved by NBCC as an Approved Continuing Education Provider, ACEP No. 6941. Programs that do not qualify for NBCC credit are clearly identified. CEU Creations is solely responsible for all aspects of the programs.

CEU Creations, Inc. is recognized by the New York State Education Department's State Board for Mental Health Practitioners as an approved provider of continuing education for licensed mental health counselors. #MHC-0199. This activity is approved for 5 contact hours.

**Cancellation Policy:** Registrants must cancel via email or phone at [patty@ceucorationsinc.com](mailto:patty@ceucorationsinc.com) or 770-880-9873 (contacting other staff members/leadership does not guarantee your cancellation.) No faxes or mail cancellations will be accepted. Cancellation Fee: \$25- Refunds will not be given for cancellations within five (5) business days prior to the workshop date.

# Resilience and Renewal: Understanding and Healing Women's Trauma

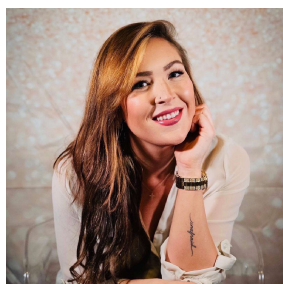
## PRESENTER BIOS



### **Marie Selleck, LMSW, CAADC,** and Owner of Marie E Selleck Therapy and ME Selleck Coaching

Marie is a licensed therapist in the state of Michigan and specializes in the treatment of PTSD, substance use disorders, anxiety disorders, self-esteem. She helps her clients find confidence, happiness, and security by equipping them with the tools they need to better understand their history, and how it has impacted their conditioning and thinking patterns, so they can better understand themselves and make the change they want.

Marie is also an online empowerment coach for women who want to recover from the impacts of a mother who was/is not emotionally present in their lives. She focuses on empowering women to recognize that their worth is not determined by their mother's reactions, affection, or approval, but is determined by how they wholeheartedly live out their values. Marie helps women gain a deeper understanding of how the attachment to an unhealthy mother can lead to challenges with self-esteem, boundaries, and relationships; as well as how to re-define themselves the way THEY want to be, connected to their own emotions, so they can live their most sincere life.



### **Gretchen McCall, BA,** Public Health, Supervisor of Braking Traffik

Gretchen is a social activist and leader in the anti-human trafficking field. She has over 4 years-experience mentoring survivors of human trafficking and providing education to the community regarding human trafficking. She has provided education to medical students, high school youth, foster care youth, domestic violence shelters and several social service agencies. Her goal is to equip professionals and community members to identify and fight human trafficking. She is a mother, supervisor, bodybuilding champion, personal trainer and is also a survivor of human trafficking and child sexual assault. She has overcome her past traumas and believes that survivors are so much more than their traumas and the most traumatic experience someone has had doesn't define who they are and isn't their identity. Her personal and professional experiences give her the ability to connect and empathize with the survivors she mentors and provide quality education to the community. Her favorite quote when addressing the issue of human trafficking is, "When you change the way you look at things, the things you look at change"- Dr. Wayne Dyer.